



Study Summary

We are currently recruiting patients for our study of biological measurements that may be related to schizophrenia, schizoaffective disorder, and bipolar disorder.

We will also examine whether these illnesses and biological measurements may be related to genetics.

Principal Investigators:

Elliot Gershon, M.D.
Foundations Fund Professor of Psychiatry and Human Genetics

Sarah Keedy, Ph.D.
Assistant Director, Cognition-Emotion Neuroscience Laboratory
Assistant Professor of Psychiatry and Behavioral Neuroscience

The Cognition-Emotion Neuroscience Laboratory is conducting research to better understand, diagnose and treat:

**SCHIZOPHRENIA
SCHIZOAFFECTIVE
BIPOLAR DISORDER**

For further information please contact us!

773-834-0222
OR
773-834-4792

<http://cnpru.bsd.uchicago.edu/BSNIP.html>

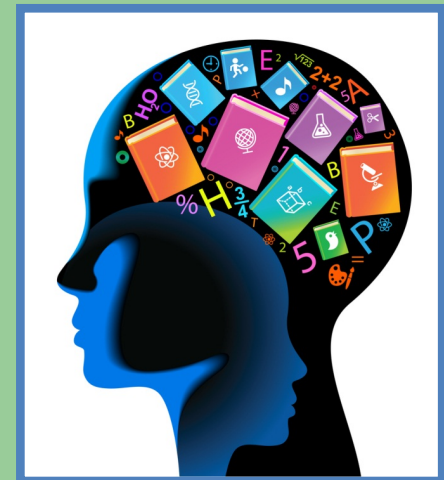


University of Chicago

**5841 S Maryland Ave.
L-460
Chicago, IL 60637
CENSL@bsd.uchicago.edu**

**Do you have
Schizophrenia or
Bipolar Disorder?**

**Participate in
Research at the
University of Chicago!**



University of Chicago

Tel: 773-834-0222

You may be able to participate if you:

- Are 18-60 years old
- Have been diagnosed with any of the following:
 - Schizophrenia
 - Schizoaffective Disorder
 - Bipolar Disorder
 - Psychosis
- Have no current problems with drugs or alcohol
- Not pregnant



STUDY PROCEDURES

- Interview about your illness

We will talk with you about your illness and medical history

- Cognitive testing

Tests of attention, memory, and problem solving

- Brain imaging

Using safe and non-invasive methods

- Eye movement testing

We will record your eye movements as you view simple images on a screen

- Questionnaires

- Blood draw OR saliva swab

*Collected for DNA analysis. **Please note that if you decline to provide a DNA sample, you cannot take part in this study.***

TIME

- Procedures are typically completed over 3 study visits
- Visit 1 (5-6 hours), Visit 2 (4-5 hours), Visit 3 (4-5 hours)

PAYMENTS

- Participants will be paid for each procedure completed, up to a maximum of \$280 including travel costs

CONTACT

773-834-0222

OR

773-834-4792

CENSL@bsd.uchicago.edu

We welcome referrals, comments, questions, and requests for information.